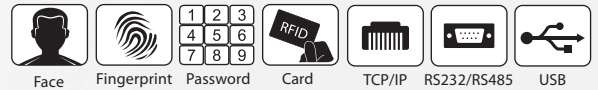


Confirmed. It's me.

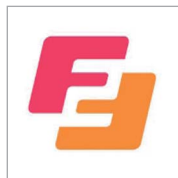


FingerTec Face ID 2

2-in-1 Face & Fingerprint Recognition Terminal

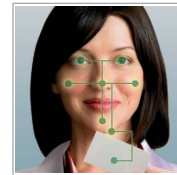


Face ID 2 is a new device for access control and time attendance that not only verifies identity using fingerprint matching, but also uses a new technology that can run a facial recognition match. This means, Face ID 2 will run a scan of your face using its high resolution infrared camera, and match it to the scan that was previously memorized into the system. It is not just in the movies anymore, this is reality! Face ID 2 brings contactless verification, tighter security and a user-friendly interface all into one compact device.



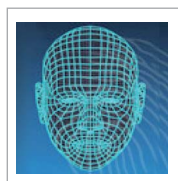
Contactless Identification

Carrying a laptop in one hand and your briefcase in the other? One of the many advantages of Face identification is that you just have the option to just stand still to get verified. No touch of the finger is required.



Multi-Verification Methods

Face ID 2 can recognize four different types of identity verifications which are: Fingerprint, Face ID, RFID card and password verifications.



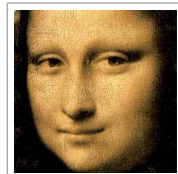
Get Airtight Security

Face ID 2 can be used as an even tighter access control device especially if both face & fingerprint biometrics authentication methods are assigned to users.



Get Verified at a Flash!

All it takes is 2 seconds to verify your identity via face recognition and 1 second via fingerprint. You will be done before you know it!



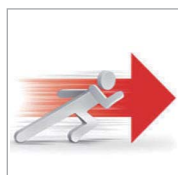
Never Lose your Identity!

Has your fingerprint been damaged due to injuries or past nature of work? Just fall back on the face recognition biometrics instead. With Face ID 2, you may have lost your fingerprint, but not your identity!



Supersized Capacity

Face ID 2 can store more than 10000 user templates and up to 100000 transaction logs which can be downloaded into a computer via TCP/IP, RS232, RS485, or via USB flash disk connection.



Shortcut Keys

Program these keys to take you to commonly used functions in just one step. Did we mention that we make things easy?



Touch Screen Menu

Everything is basically a touch away with Face ID 2. The full colour touch screen makes communication with the device much more convenient and personal.

WEB LINK



• <http://info.fingertec.com/faceid2-1>



• <http://info.fingertec.com/faceid2-2>



• <http://info.fingertec.com/faceid2-3>



• <http://info.fingertec.com/faceid2-4>



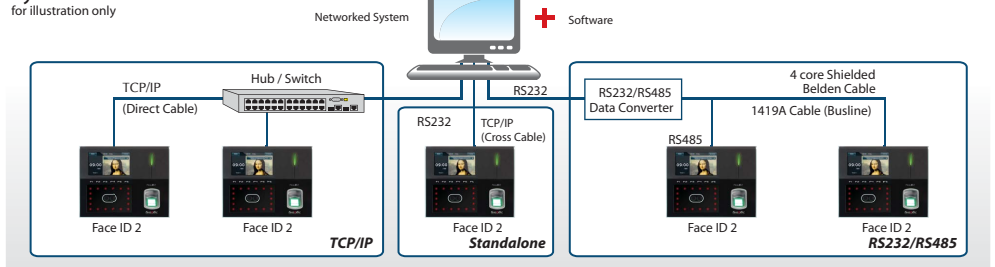
• <http://info.fingertec.com/faceid2-5>



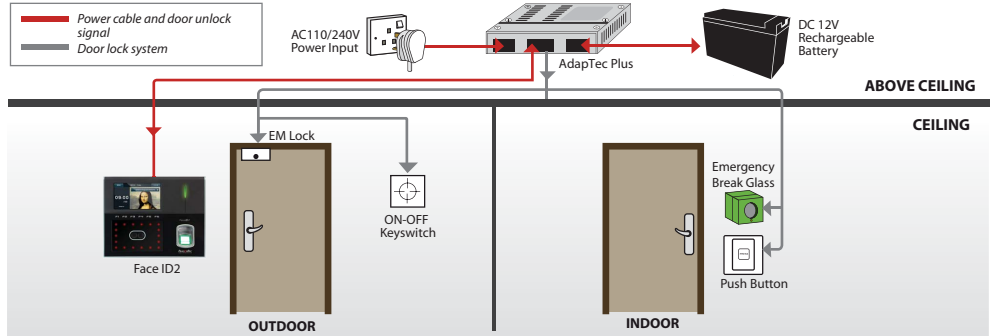
• <http://info.fingertec.com/faceid2-6>

LAYOUT PLAN

System Communication



Installation Diagram



SPECIFICATIONS

MODEL	Face ID 2
SURFACE FINISHING	Acrylonitrile butadiene styrene (ABS) & acrylic
TYPE OF SCANNER	High resolution infrared camera & fingerprint scanner
MICROPROCESSOR	800 MHz
MEMORY	256 MB Flash Memory & 128 MB SDRAM
ALGORITHM	Face BioBridge VX 8.0, Fingerprint BioBridge VX 9.0 / VX 10.0
PRODUCT DIMENSION (L X W X H), mm	207 x 120 x 145
STORAGE	
• Fingerprint templates	10000
• Face templates	500
• Cards	10000
• Transactions	200000
ENROLLMENT & VERIFICATION	
• Methods	Face (1:1, 1:N), fingerprint (1:1, 1:N), card or password
• Recommended fingerprint per user ID	2
• Fingerprint placement	Any angle
• Verification time – Face (sec)	< 2
• Verification time – Fingerprint (sec)	< 1
• Fingerprint	FAR < 0.0001%, FRR < 0.1%
• Face	FAR < 0.01%, FRR < 0.1%
CARD TECHNOLOGY	
• RFID: 64-bit, 125kHz, RF output power (EN300-330)	Yes
• MIFARE: MIF550/S70, 13.56MHz	Made to order
• HID: HID 1325, 26-bit, 125kHz	Made to order
COMMUNICATIONS	
• Method	TCP/IP, RS232, RS485, USB disk, (Optional WiFi, GPRS & 3G)
• Baud rates	9600, 19200, 38400, 57600, 115200
• Wiegand	26-bit output
OPERATING ENVIRONMENT	
• Temperature (°C)	0 ~ 45
• Humidity (%)	20 ~ 80
• Power input	DC 12V 3A
TIME ATTENDANCE	
• Siren	Built-in and external
• Work codes	Yes
• Fast transaction checking	Yes
MULTIMEDIA	
• Display	4.3" 65K color TFT touch screen panel
• Photo-ID	Yes
• Short messaging	Yes
• Day light saving timer	Yes
• Internal backup battery	Yes (DC 12V, 2000mAh)
ACCESS CONTROL	
• EM lock driving output	DC 12V / relay output
• Alarm output	NO/NC
VOICE / DISPLAY LANGUAGE (TERMINAL)	English (Standard), Arabic, Indonesian, Chinese Traditional / Simplified, Cantonese, Vietnamese, Spanish, Portuguese (Portugal), Turkish, Persian. Other languages are available upon request.

NOTE: Specifications are subject to change. Check <http://product.fingertec.com> for latest product information.

Authorized Reseller:



Packaging

Dimension (mm) : 298 (L) x 123 (W) x 222 (H)
Weight : 1.9 kg



FINGERTEC
www.fingertec.com

© 2000-2014 FingerTec Worldwide Limited. All rights reserved.